



8

1

					"	"	2019
2973							
"	"	"	"	"		81,893.12	
		"	"	"	"	"	"
2020	4	10			2020	4	16
2020	4	21					
					"	"	"

91420000670357025U

300527

www.china-huazhou.com

,

1

2012 3 23

[2012]142

2012 3 30

2011 8 31

53,324.39 1:0.6507 34,700

[2012] 1-0028

34,700 2012 3

31

420000000010708

"

"

2013 6 3 2013

2011 8 31

52,719.92

53,324.39

604.47

1:0.6507

1:0.6582

2013 5 15

[2013] 710940

1	SS	65.599%
2	SS	19.587%
3	SS	2.935%
4	SS	2.935%
5	SS	2.935%
6		6.099%
		<b>100.00%</b>

[2015]245

A

115,700,000

6.64 / 2016 8 5

462,700,000

2

2020 2 20

			%
1		435,328,835	47.64
2		129,983,472	14.22
3	0	19,477,282	2.13
4		19,477,282	2.13
5		13,777,864	1.51
6		11,257,700	1.23
7		11,077,928	1.21

				%
8	—		6,781,733	0.74
9			5,766,232	0.63
10	—		4,881,324	0.53
		-	<b>657,809,652</b>	<b>71.44</b>

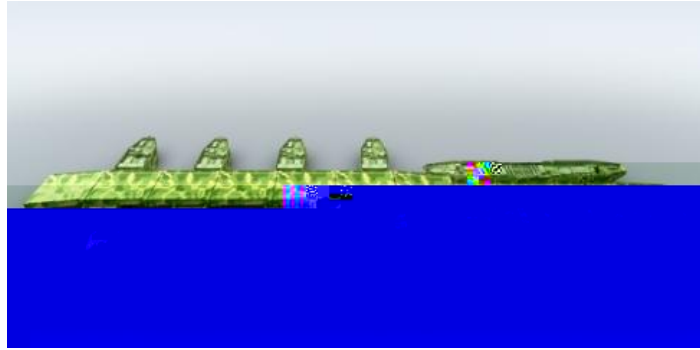
**1**

25

40-80

1

" "



19



4

3

5



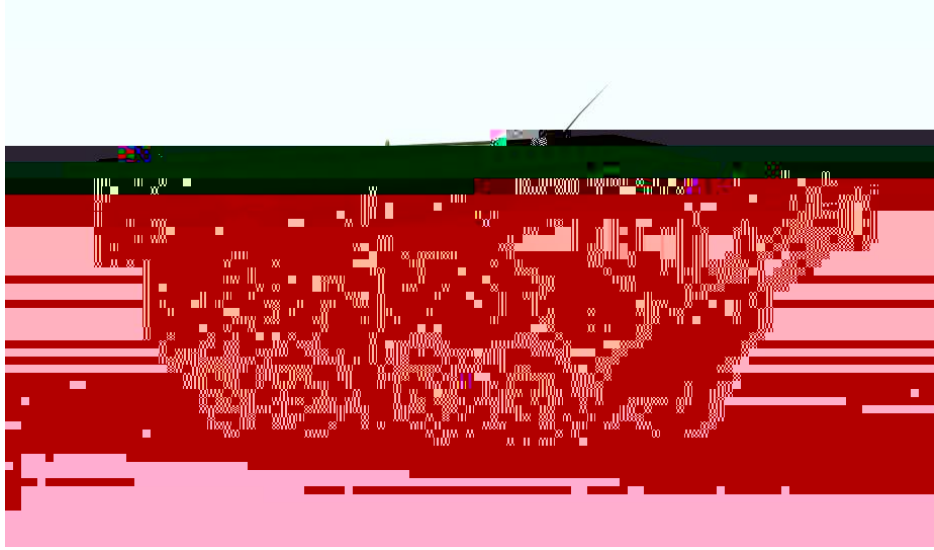
5

4

18.2

3.3

8



6

3

1

2

3

4

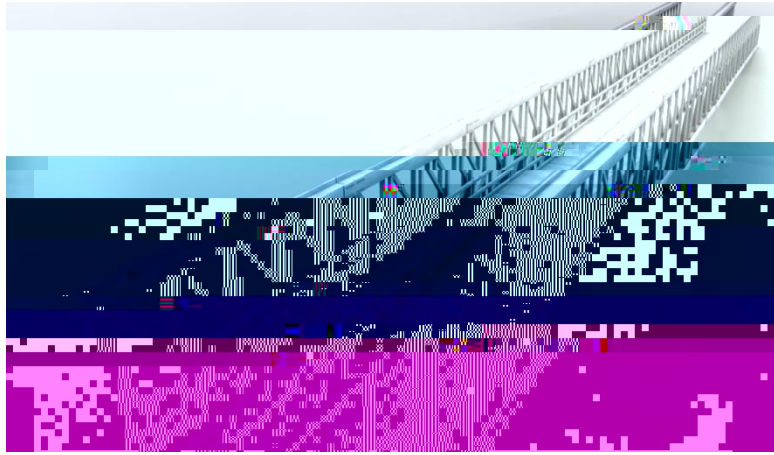
5

321

CB100

CB200

ZB200



7

4


2

	■ ■ 10
	■
	■

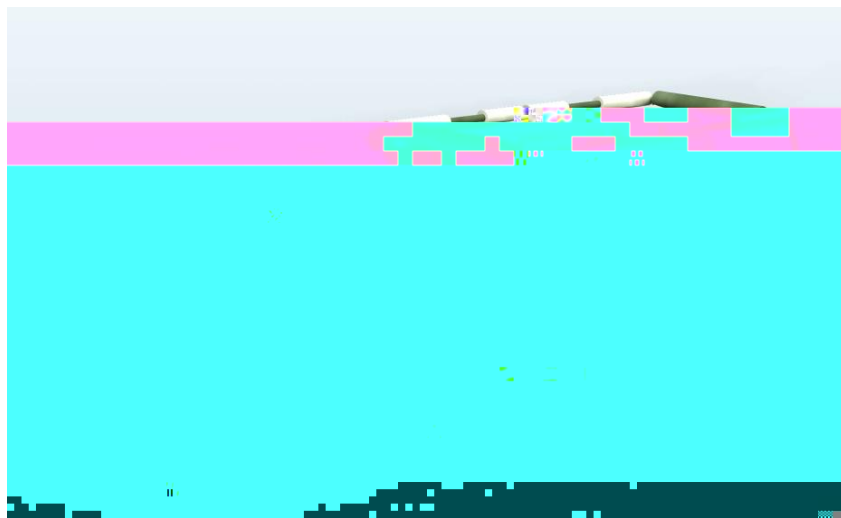
3

100

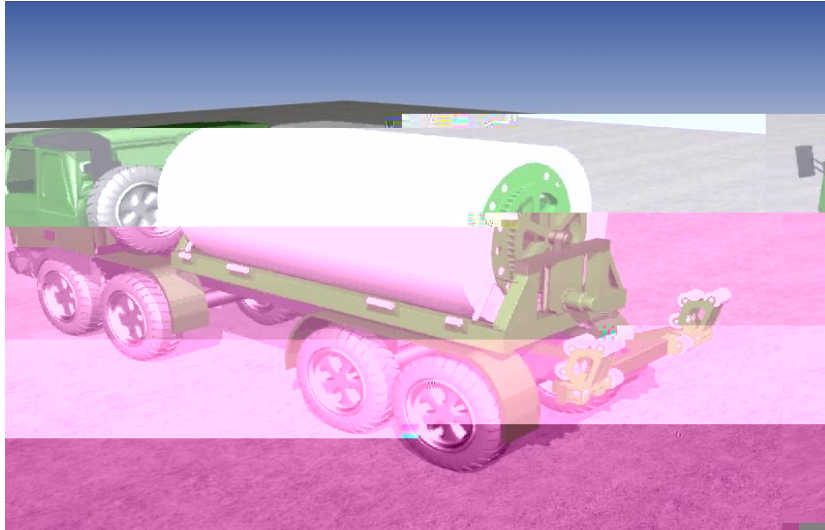
4.2

100

4.2



8



9

4

60 300

5

**6**

/

**7**

**8**

1

	2019		2018		2017	
	12	31	12	31	12	31
		394,273.24		419,351.97		361,649.46

2019		7.64%	0.17	0.17
		7.20%	0.16	0.16
2018		10.53%	0.33	0.33

	<b>2019.12.31/ 2019</b>	<b>2018.12.31/ 2018</b>	<b>2017.12.31/ 2017</b>
	4.41	3.85	3.06
	0.61	0.68	0.71
	28,228.64	33,095.39	29,245.66
	11.59	60.08	209.45
	0.06	-0.08	-0.15
	0.92	-0.57	0.09
	4.17%	3.24%	2.96%

$$= \quad /$$

$$= \quad - \quad - \quad - \quad - \quad /$$

$$= \quad /$$

$$= \quad /$$

$$= \quad /$$

$$=$$

$$= \quad + \quad + \quad /$$

$$= \quad \#$$

	86.15%		62,288
		0.76%	

2019 4 24

2019 6 14          2019

2020 1 9

2019 2973

81,893.12

2020 4 30

2020 361

1

2

1

2

3

4 2020 4 29 2019

15,970.83

15,049.35 2018 2019

1

2

3

1

1

2017	2018	2019	
			44,569.45
106,411.02	54,117.93		12.32% 25.38%
13.73%			

2

2017	2018	2019	
			62,356.18
45,301.36	55,554.35		17.24% 10.80%
14.09%			

3

2017	2018	2019	
4,483.41	-50,276.50	84,436.02	2018
		54,759.91	1,321.39%
	2018		2018

4			
2019	51,702.05	10.29%	
10,268.91	19.36%		15,970.83
	28.56%	2019	

15%

" "

" "

" "

" "

" "

" "

" "

2020

" "

2020  
2020 3

2020

50%

1

7%

2

7%

3

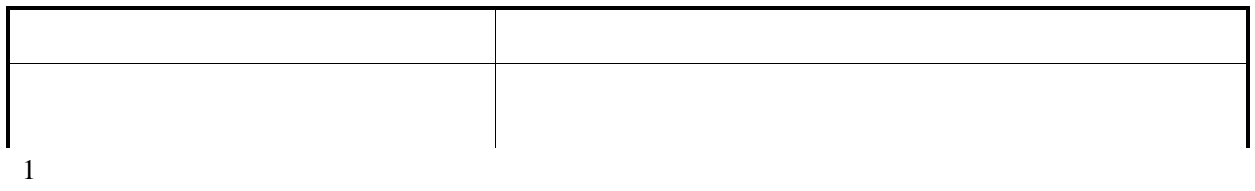
22

4

5

8

9




48

21

100026

010-60838380 13810115579

010-60836029



(本页无正文,为《中信建投证券股份有限公司关于中德安特(北京)设备股份有限公司创业板公开发行股票之上市保荐书》之盖章页)

保荐代表人: 张明慧 杨萌  
张明慧 杨萌

法定代表人(或授权代表): 张佑君  
张佑君

